

URD METER POLE

NOTE:

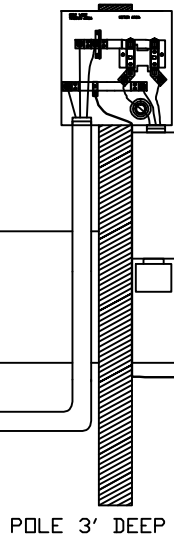
1. METER BASE CAN BE MOUNTED ON WALL
2. SET POLE WITHIN 12" OF TRAILER
(URD SERVICE DITCH WILL BE 2' DEEP)
3. METER BASE MUST BE INSTALLED PRIOR TO ROUGH IN INSPECTION.

200A *	100A *
2-2/0CU (HOT)	2-#4CU (HOT)
1-1/0CU (NEUT) FACTORY WHITE	1-#4CU (NEUT) FACTORY WHITE
1-4THWCU (GR) FACTORY GREEN	1-#4THWCU (GR) FACTORY GREEN

* IF ALUMINUM CONDUCTOR IS USED, CONDUCTOR MUST BE 1 SIZE LARGER

FRONT VIEW

SEE ADDITIONAL DRAWING ON BACK FOR FLEC METER BASE REQUIREMENTS.



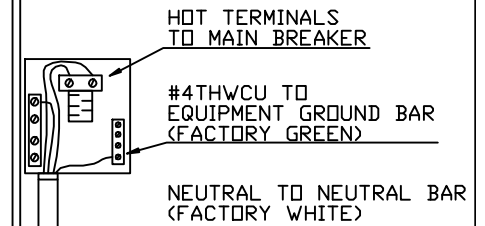
METER BASE
5'6" TO 6' HIGH

DISCONNECT
(FUSED OR BREAKER)
WITH PROVISION FOR
ADDITIONAL HOOK-UP

#4THWCU (FACTORY GREEN)
DISCONNECT TO SWITCHBOX
#4 BARE COPPER UNBROKEN
FROM METERBASE TO
GROUNDING ELECTRODE

BURY GROUND ROD
8' DRIVEN GROUND
ROD

SIDE VIEW

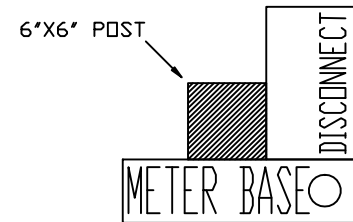


HOT TERMINALS
TO MAIN BREAKER

#4THWCU TO
EQUIPMENT GROUND BAR
(FACTORY GREEN)

NEUTRAL TO NEUTRAL BAR
(FACTORY WHITE)

TOP VIEW



6"X6" POST

METER BASE

DISCONNECT