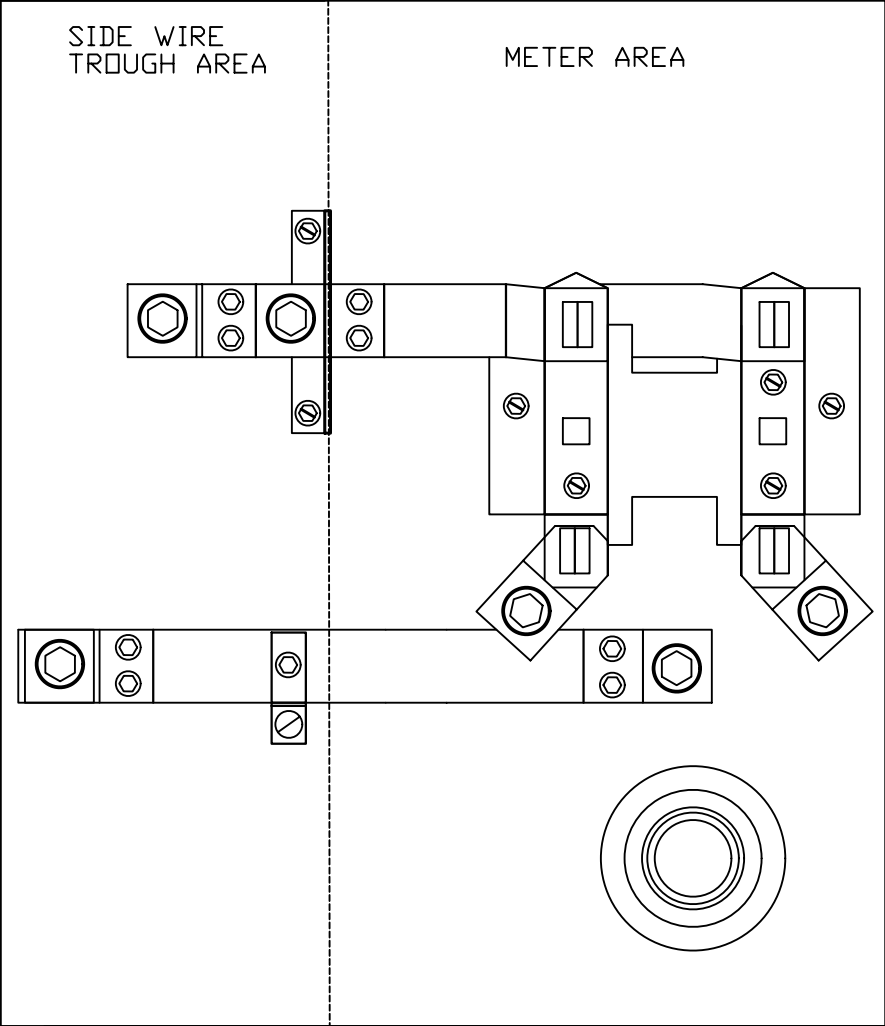


UNDERGROUND METERBASE

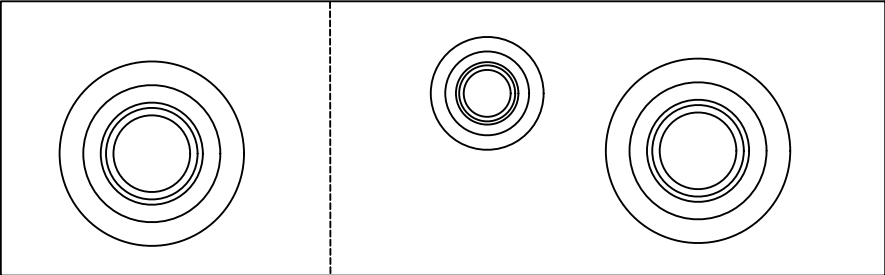
THIS AREA
RESERVED
FOR FLEC
INSTALLED
SERVICE.

PLAN VIEW

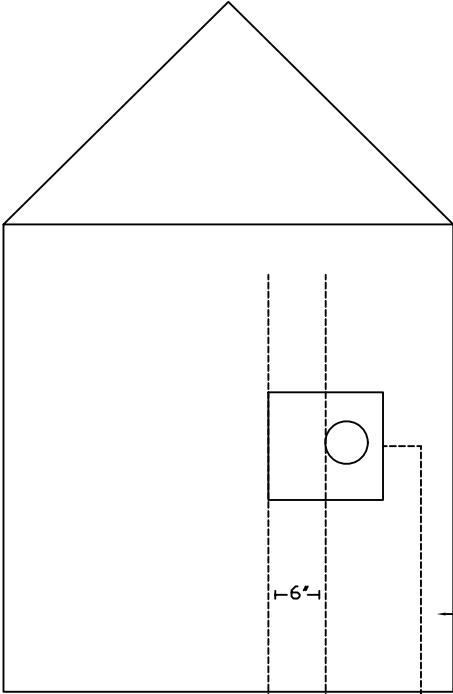


4 1/2"
MINIMUM

BOTTOM VIEW



- NOTES:
- 1: METER BASE MUST BE INSTALLED PRIOR TO ROUGH IN INSPECTION.
 - 2: ALL UNDERGROUND METER BASES MUST MEET THESE SPECIFICATIONS.



METER SOCKET
TO GROUND
LEVEL MUST
BE
5 1/2 FEET.

THIS AREA
RESERVED
FOR FLEC
INSTALLED
SERVICE.

FORT LOUDOUN
ELECTRIC COOPERATIVE
ENGINEERING DEPARTMENT

UNDERGROUND METER BASE
SPECIFICATIONS

8-18-2006, CWC

